



Brewood School

Careers Provision Plan

2024/2025

Document Owner: Michelle Brayford

Document Review Date: 22/11/24

Gatsby Benchmarks

1. A stable careers programme
2. Learning from career and labour market information
3. Addressing the needs of each pupil
4. Linking curriculum learning to careers
5. Encounters with employers and employees
6. Experiences of workplaces
7. Encounters with further and higher education
8. Personal guidance

Whole School Approach

Activity	Details	Intended Impact	Benchmark
----------	---------	-----------------	-----------



Displays	Careers Education, Information, Advice, and Guidance (CEIAG) displays are strategically placed throughout the school, featuring content such as labour market insights, career pathways, post-16 and post-18 options, skill development, and application guidance.	CEIAG displays boost student awareness of career options and pathways, inspire aspirations, and support skill development. They foster informed decision-making, create discussions, meet guidance standards, and promote readiness for life beyond school.	1,2,4
Morrisby	The Morrisby platform is an online career guidance tool that helps students explore their strengths, interests, and aspirations through a series of assessments. It offers the students personalised career and education suggestions based on their results, labour market information, and tools for creating action plans enabling students to make informed decisions about their futures. Students can also research different Job profiles to give them a greater	The Morrisby platform empowers students with a deeper understanding of their strengths and potential career paths, boosting confidence and motivation. By providing personalised guidance, it supports informed decision-making, enhances engagement with careers education, and helps students plan effectively for their post-16 and post-18 options. Students have access to tailor careers suggestions and information about	1,2,3,4,8



	<p>understanding of different job roles, requirements and what is involved.</p>	<p>qualification requirements, salaries, videos, professional bodies and opportunities. They can access this information in regular supported careers sessions to investigate the suggestions and what their potential career pathway is.</p> <p>Students complete their Morrisby Initial assessments when they join our school. They then get the opportunity to redo the assessments each year or if they want to, on a more regular basis. The Morrisby Platform changes its assessment questions based on the year group of the student and the stage they are at in their education. Morrisby is accessed via a log in and students can use their log ins at home if they wish. Students can also set up parent/carers access if they wish so that their parents or careers are involved in</p>	
--	---	--	--



		the young person's career's education journey.	
Skills Builder	<p>The Skills Builder Universal Framework is integrated across the Brewood Curriculum. The Skills Builder Framework allows us to develop the 8 essential skills in our young people through a sequence of steps – Speaking, Listening, Creativity, Problem Solving, Aiming High, Staying Positive, Teamwork and Leadership. These skills have been identified as highly transferable to do any job, anywhere. The framework is currently used in Nursey Schools, Schools, Universities and workplaces all over the globe, making the framework truly universal.</p>	<p>The Skills Builder platform empowers students to build their employability skills. Using the formative assessment tool, teachers can identify the student's current skill level and access resources to support the development of each specific step. Students go from absolute beginner to complete mastery.</p>	



	<p>The Skills Builder Hub is a formative assessment tool for Staff to benchmark our young people. Staff Re-assess the student's development in these skills. termly. There are hundreds of short lessons, extended projects, display materials and more for staff to use with the students and with the built-in tracking tools, you can see the impact of the resources and learning on learners' essential skills.</p>		
Skills Builder Challenge Day	<p>Skills Builder Challenge Days are an exciting and engaging way for learners to reinforce their essential skills by applying them in a real-life challenge.</p>	<p>Students learn to develop and reinforce their essential skills in a real-life challenge.</p>	1,3,4
Careers Curriculum	<p>The careers curriculum is currently being reviewed. It is currently covered predominantly through PSHE and ICT, and through opportunities across the whole curriculum, as well</p>	<p>Students learn about careers options and understand the steps into their choices and pathways. They will have a strong understanding of their priorities, interests and how to</p>	1,2,3,4,5,6,7,8



	<p>as wider opportunities when we have visitors, go out on educational visits and careers events and activities.</p> <p>The review is taking place to ensure that Brewood provides a comprehensive and tailored curriculum for all pupils within the different assessment pathways. Part of this Process is the Student, parent/carer and employer evaluations and surveys. These surveys will allow us to collect feedback and use that to inform next step planning on the provision and include the voices of the students and their parents and carers.</p>	<p>access the world of work by the time they leave Brewood.</p>	
--	---	---	--



Careers across the wider school curriculum	The Brewwood curriculum uses themed based learning in KS3 to connect classroom learning with real-world careers and provide students with knowledge and skills that will prepare them for a variety of career paths. In KS4 and KS5, teachers discuss how their subjects can be applied to various careers and how they support students in their future lives.	Students learn about and explore pathways and opportunities beyond the core subjects. They will develop a more comprehensive understanding of their skills, interests and potential careers options in: Creative Arts and Design, ICT, Physical Education and Sports, Humanities, Health and Social Care as well as Vocational and Technical Education. Students can then make informed decisions about their futures.	1,3,4,5,6
School Website	The school website displays the Horizon Care and Education careers vision and provision. This page is accessed via a hyperlink in the. The school's careers policy can be viewed on the school website.	Parents/Carers and students have a clear understanding of the aims, principles and the structure of the Brewwood Careers programme.	1,2,3,4,5,6,7,8
Horizon Careers Chronicle	The monthly Horizon Careers Chronicle is published to provide students with comprehensive and up-	The Horizon Careers Chronicle aims to help students to understand what	3,4,5,6,7,8



	to-date information. Each edition covers: careers focus, explore careers, skill of the month, spotlight on careers and what is coming up that month.	career-related activities they could focus on. Relevant career-related success stories are shared, showcasing what could be achieved by the Brewood students.	
Engagement with National Events	National Events are planned for each academic year to provide all students with relevant careers information and to promote different career pathways. Creative Careers Week British Science Week National Apprenticeships Week National Careers Week	These events enable students to identify hopes and dreams, challenge stereotypes and discrimination. Students feel supported in researching and understanding options and choices in education and work-based training.	2,3,4,5,6,7
Parental Engagement	CXK Careers Meeting notes are shared with parents/carers. Brewood works closely with local FE colleges, FE providers and alternative provisions. We support parents/carers with attending open	Parents/Carers are provided with relevant careers information to enable them to guide and support their students on their career journey.	1,2.7



	<p>days and arranging bespoke college visits.</p> <p>Virtual Careers Meeting to provide parents/carers with comprehensive information about the Brewood careers programme and to share relevant links and resources to support</p>		
Trips & Visits	<p>Trips and visits are planned to provide students with real-world exposure and to build connections.</p>	<p>Students gain a clearer understanding of what various jobs entail. They observe professionals at work, learning about skills and competencies in a particular field.</p> <p>Students feel inspired and motivated to pursue their career paths by setting goals and working towards achieving them. They gain a better understanding of the qualifications they need to pursue.</p>	5,6,7



Strand Specific Approach

KS3 Strand 1

Activity	Details	Intended Impact	Benchmark
Curriculum	Self-Awareness Stereotypes What is work?	Students cover essential areas within the CDI framework to develop the knowledge, skills and understanding needed to navigate their	1,2,3,4,5,6



	Careers Families	future careers effectively. Students will discover, explore and reflect throughout the career's curriculum.	
Group Career Information Advice and Guidance delivered by Careers Advisor.	Students in Term 5/6 will receive careers information, advice and guidance delivered by careers advisor.	Students learn from one another, share experiences and discuss ideas. They are exposed to different ideas and career possibilities. The Careers Advisor helps the students to explore and evaluate various career options, gain confidence and create realistic career plans.	3,8
Provider Access Legislation	Students have two meaningful encounters with providers of technical education or apprenticeships.	Students develop their understanding of technical pathways and apprenticeships and how these lead to careers.	5,6,7

KS3 Strand/Pathway 2

Activity	Details	Intended Impact	Benchmark
----------	---------	-----------------	-----------



Curriculum	Investigate Careers Futures Lessons Stereotypes Employability Skills Careers Intervention and review	Students cover essential areas within the CDI framework to develop the knowledge, skills and understanding needed to navigate their future careers effectively. Students will discover, explore and reflect throughout the career's curriculum.	1,2,3,4,5,6
Group Career Information Advice and Guidance delivered by Careers Advisor	Students in Term 5/6 will receive careers information, advice and guidance delivered by careers advisor.	Students learn from one another, share experiences and discuss ideas. They are exposed to different ideas and career possibilities. The Careers Advisor helps the students to explore and evaluate various career options, gain confidence and create realistic career plans.	3,8
Provider Access Legislation	Students have two meaningful encounters with providers of technical education or apprenticeships.	Students develop their understanding of technical pathways and apprenticeships and how these lead to careers.	5,6,7



KS3 Strand/Pathway 3

Activity	Details	Intended Impact	Benchmark
Curriculum	Investigating Careers Options Challenging Workplace Stereotypes Employability Skills Decision Making	Students cover essential areas within the CDI framework to develop the knowledge, skills and understanding needed to navigate their future careers effectively. Students will discover, explore and reflect throughout the careers curriculum.	1,2,3,4,5,6
Careers Information, Advice and Guidance delivered by Careers Advisor.	Students in Term 5/6 will receive careers information, advice and guidance delivered by careers advisor.	Students learn from one another, share experiences and discuss ideas. They are exposed to different ideas and career possibilities. The Careers Advisor helps the students to explore and evaluate various career options, gain confidence and create realistic career plans.	3,8
PAL	Students have two meaningful encounters with providers of technical	Students develop their understanding of technical pathways and apprenticeships and how these lead to careers.	5,6,7



	education or apprenticeships.		
--	-------------------------------	--	--

KS4 Strand/Pathway 1

Activity	Details	Intended Impact	Benchmark
Curriculum	<p>Preparing for work experience CVs Aptitudes Future Lessons Apprenticeships Qualification Education Introduction to Finance Investigating Post 16/18 options and applications Employability skills</p> <p>In KS5, the curriculum focuses on: understanding</p>	<p>Students cover essential areas within the CDI framework to develop the knowledge, skills and understanding needed to navigate their future careers effectively. Students will plan, decide, review and navigate throughout the careers curriculum.</p> <p>Students in KS5 will be able to make important decisions about their future and utilise effective careers guidance to help them explore their options and make informed choices.</p>	1,2,3,4,5,6



	careers options, skills development, exploring different industries and career paths, subject choices, personal and financial planning, professional networking, support and guidance channels.		
Work Experience	All students attend in-person or virtual work experience in KS4/5.	Students will gain experience in a specific field or role to develop and refine job-specific skills. It will foster the Skills Builder essential skills and help them to become more competitive in the job market. Work experience can help students if a particular career or field is a good fit for them, leading to more informed career choices. It will empower them with the tools and knowledge to thrive in various professional environments.	3,5,6



Career Information Advice and Guidance delivered 1-1 from Careers Advisor.	All students receive careers information, advice and guidance delivered 1-1 from careers advisor.	The Careers Advisor can focus on specific needs, aspirations and challenges of the student, providing targeted advice and support to achieve their career goals.	3,8
Transition Support	All students have access to transition support for the designated teacher, careers lead and post 16/18 provision.	Students transition successfully to their post 16/18 provision.	3,7,8
PAL	Students have four meaningful encounters with providers of technical education or apprenticeships by the Year 13.	Students develop their understanding of technical pathways and apprenticeships and how these lead to careers.	5,6,7

KS4 Strand/Pathway 2

Activity	Details	Intended Impact	Benchmark
----------	---------	-----------------	-----------



Curriculum	<p> Preparing for work experience CVs Aptitudes Apprenticeships Qualification Education Introduction to Finance Investigating Post 16/18 options and applications Employability skills Job applications </p> <p> In KS5, the curriculum focuses on: understanding careers options, skills development, exploring different industries and career paths, subject choices, personal and financial planning, professional networking, </p>	<p>Students cover essential areas within the CDI framework to develop the knowledge, skills and understanding needed to navigate their future careers effectively. Students will plan, decide, review and navigate throughout the career's curriculum.</p>	1,2,3,4,5,6
------------	---	--	-------------



	support and guidance channels.		
Work Experience	All students attend in-person or virtual work experience in KS4/5.	Students will gain experience in a specific field or role to develop and refine job-specific skills. It will foster the Skills Builder essential skills and help them to become more competitive in the job market. Work experience can help students if a particular career or field is a good fit for them, leading to more informed career choices. It will empower them with the tools and knowledge to thrive in various professional environments.	3,5,6
Career Information Advice and Guidance delivered 1-1 from Careers Advisor.	All students receive careers information, advice and guidance delivered 1-1 from careers advisor.	The Careers Advisor can focus on specific needs, aspirations and challenges of the student, providing targeted advice and support to achieve their career goals.	3,8
Transition Support	All students have access to transition support for the designated teacher, careers	Students transition successfully to their post 16/18 provision.	3,7,8



	lead and post 16/18 provision.		
PAL	Students have four meaningful encounters with providers of technical education or apprenticeships by the Year 13.	Students develop their understanding of technical pathways and apprenticeships and how these lead to careers.	5,6,7

KS4 Strand/Pathway 3

Activity	Details	Intended Impact	Benchmark
Curriculum	Preparing for work experience CVs Aptitudes Apprenticeships Qualification Education Understanding Finance	Students cover essential areas within the CDI framework to develop the knowledge, skills and understanding needed to navigate their future careers effectively. Students will plan, decide, review and	1,2,3,4,5,6



	<p>Investigating Post 16/18 options and applications Employability skills Job applications</p> <p>In KS5, the curriculum focuses on understanding careers options, skills development, exploring different industries and career paths, subject choices, personal and financial planning, professional networking, support and guidance channels.</p>	navigate throughout the careers curriculum.	
Work Experience	All students attend in-person or virtual work experience in KS4/5.	Students will gain experience in a specific field or role to develop and refine job-specific skills. It will foster the Skills Builder essential skills and help them to become more competitive in the job market. Work experience can help students if a particular career or field is a good fit for them, leading to more informed career choices. It will empower	3,5,6

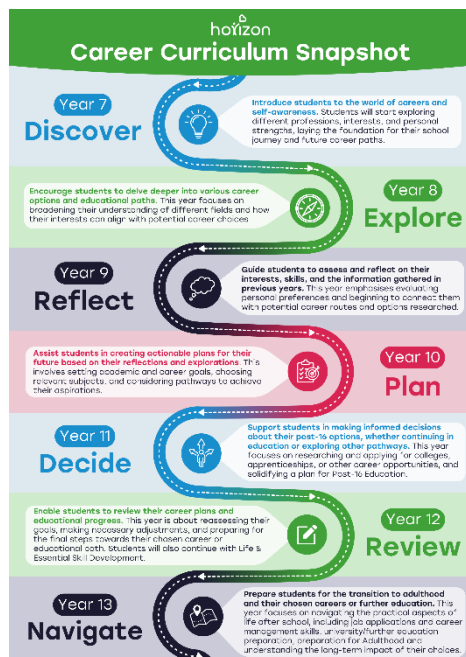


		them with the tools and knowledge to thrive in various professional environments.	
Career Information Advice and Guidance delivered 1-1 from Careers Advisor.	All students receive careers information, advice and guidance delivered 1-1 from careers advisor.	The Careers Advisor can focus on specific needs, aspirations and challenges of the student, providing targeted advice and support to achieve their career goals.	3,8
Transition Support	<p>All students have access to transition support for the designated teacher, careers lead and post 16/18 provision.</p> <p>Designated teacher also continues to provide support to the student, new provision or work and Parents/Carers for at least the first term through phone calls and check in's to ensure that placement has been successful and signposts to further support if needed.</p>	Students transition successfully to their post 16/18 provision.	3,7,8



PAL	Students have four meaningful encounters with providers of technical education or apprenticeships by the Year 13.	Students develop their understanding of technical pathways and apprenticeships and how these lead to careers.	5,6,7
-----	---	---	-------

The Careers Curriculum:



At Brewood School, we are committed to providing all students with relevant and meaningful experiences regarding their career choices and futures. If any parent, carer, or member of the community feels that they can offer support with our in-school career programmes and/or opportunities for our young people we would welcome your communication.

To make contact, please e-mail: michelle.brayford@horizoncare.co.uk