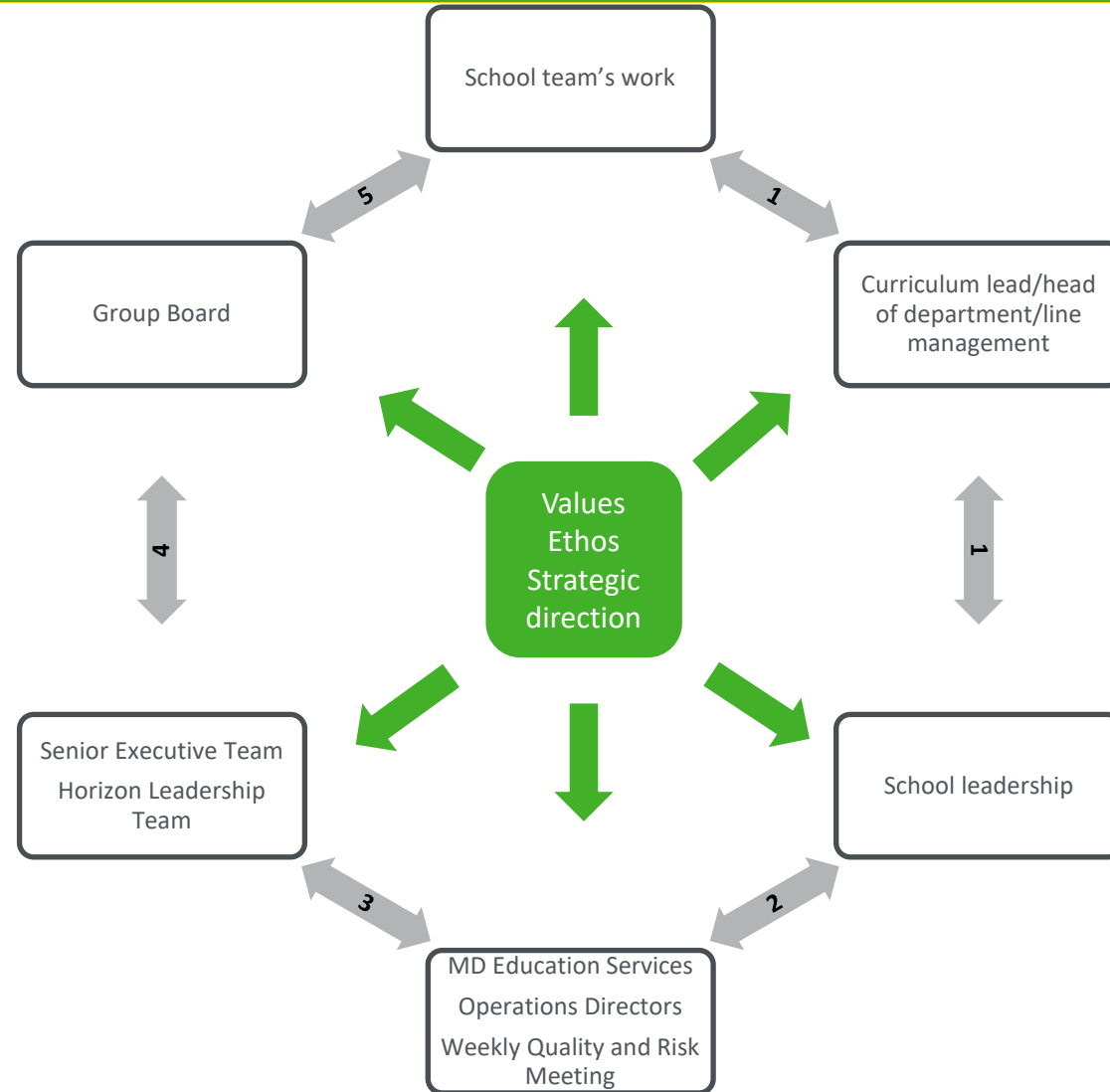


# How does governance work?

1. Information is passed up through the line management structure to the school's leadership team – this varies according to each school's organisational structure.
2. The Head Teacher reports activity to the Operations Director and Managing Director for Education Services.
3. The Managing Director reports activity to the Horizon Leadership Team and the Senior Executive Team at the weekly Quality and Risk Meeting and at monthly Operations Reviews (the Chair of the Proprietor forms part of these bodies).
4. The Senior Executive Team reports activity to the Group Board.
5. The flow of information up and down the structure makes sure that the school's work informs the Board's decision-making, and that the Board's decisions inform the school's work.



All of our activity is informed by our values, ethos and strategic direction.

Head teachers report key data to the Operations Director and Managing Director every week. The data are then aggregated into a monthly report.

There is independent verification of the school's performance through the work of the School Improvement Partner and via visits undertaken by senior colleagues from outside of the school.